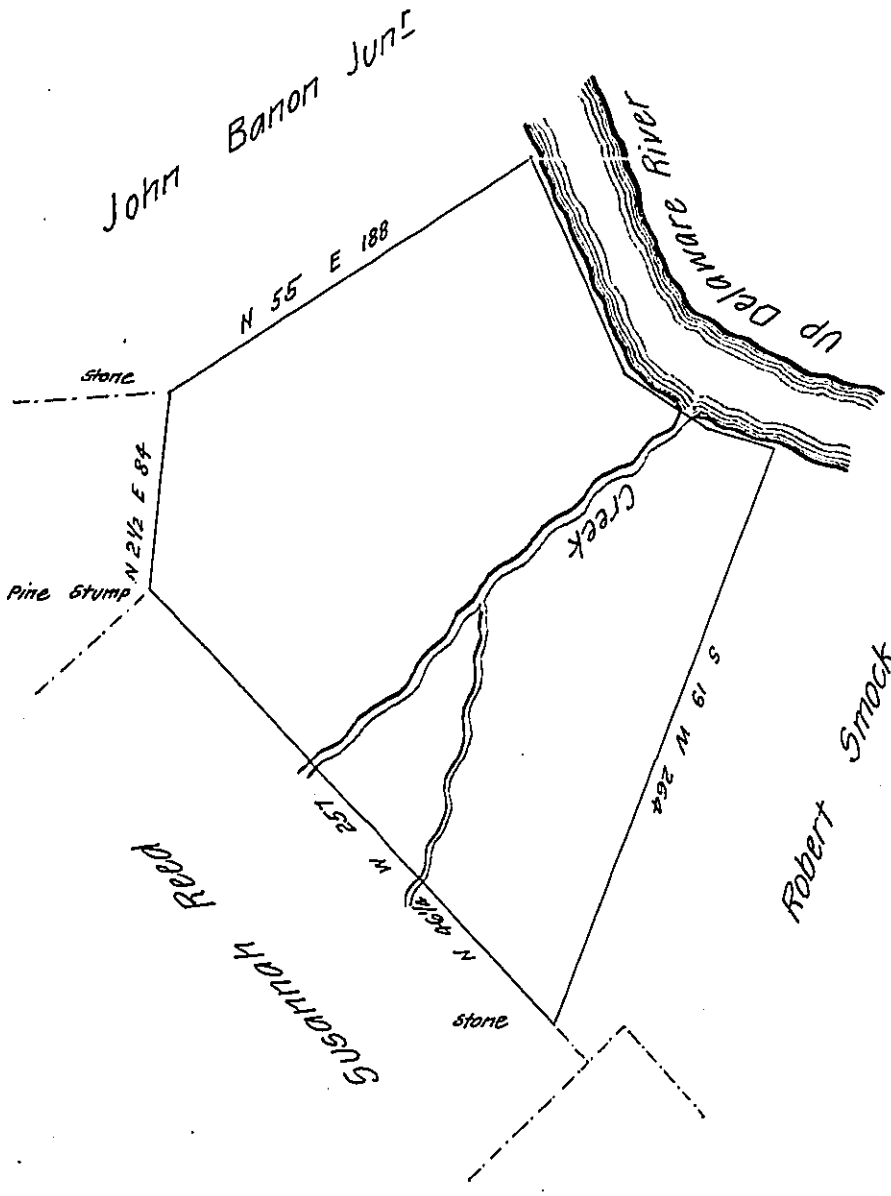


FORM No. 1.

Bearings & distances  
down Delaware River  
S 26 E 100  
S 60½ E 44  
S 77 E 32¼  
176¼

Joannah Curry



By virtue of a Warrant dated the 7<sup>th</sup> day of May 1849 surveyed  
the 28<sup>th</sup> July 1849 to William K. Stone the above described Tract of Land (being  
Improved) adjoining lands surveyed to John Barron Junr. Situate in Westfall  
Township Pike County Containing three hundred and twenty one acres fifty five  
perches and the allowance of six per cent for roads &c.<sup>a</sup>

Pr. John T. Cross D. S.

To John Laporte Esq.

Surveyor General of Penn<sup>a</sup>

IN TESTIMONY that the above is a copy of the original remaining on file in  
the Department of Internal Affairs of Pennsylvania, made  
comformably to an Act of Assembly approved the 16th day of  
February 1833, I have hereunto set my hand and caused  
the Seal of said Department to be affixed at Harrisburg,  
this fourth day of March 1907

*Isaac D. Brown*  
Secretary of Internal Affairs.